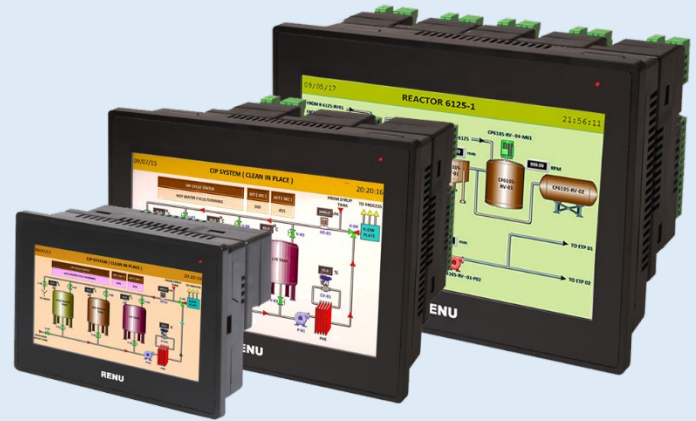


FlexiPanels® FP2 series HMI with I/Os



SALIENT FEATURES

- 4.3", 7" and 10.1" Color TFT display options
- Pluggable I/O Module Support
- Suitable for basic applications, trending, tasks, alarms, Data logging, IEC 61131-3 programming environment
- RAM: 16MB
- Approvals: CE, UL Class I Div 2, RoHS, IP66

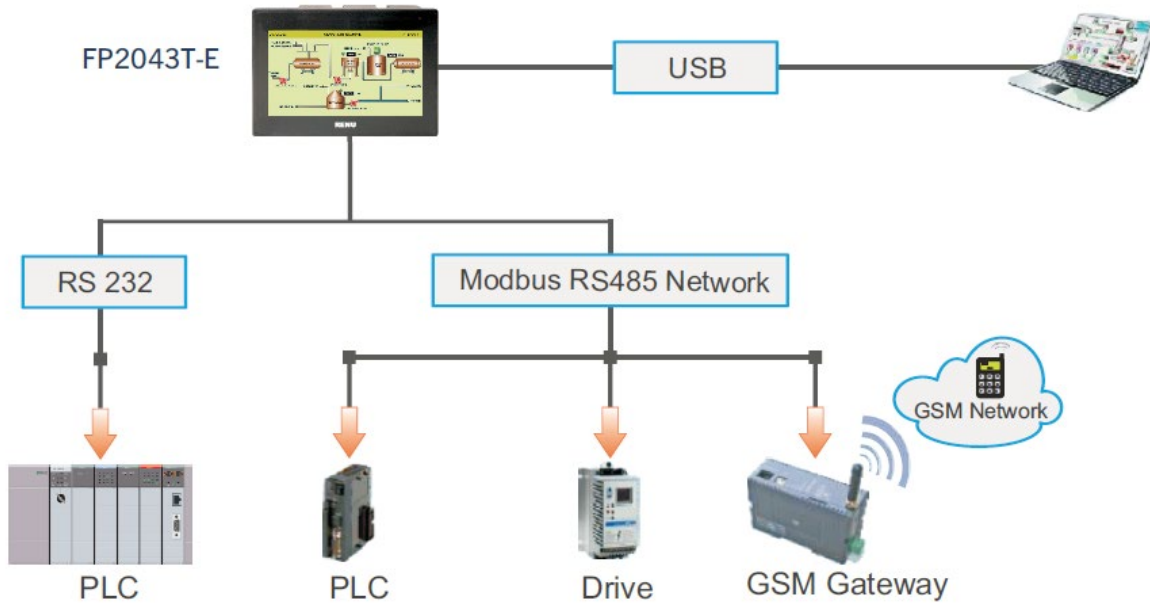


MODEL COMPARISON

Part Number	FP2043T-E	FP2043TN-E	FP2070T-E	FP2070TN-E	FP2101T-E	FP2101TN-E
Size	4.3" WQVGA Color TFT		7" WVGA Color TFT		10.1" WSVGA Color TFT	
Resolution	480 x 272 pixels		800 x 480 pixels		1024 x 600 pixels	
Touch Screen	Analog Resistive					
CPU and Power						
CPU	32-bit RISC processor					
RAM	16MB					
Power Supply	24VDC (±15%)					
RTC	Built-in					
Communication						
Serial	1 x RS232, RS485#		2 x RS232/RS485		2 x RS232/RS485	
USB Device	1x USB Type C					
USB Host	1x 2.0					
Ethernet	NA	1x 10/100Mbps	NA	1x 10/100Mbps	NA	1x 10/100Mbps
Pluggable I/O						
	1		3		5	
Environment & Approvals						
Operating Temperature	0°C to 50°C					
Storage Temperature	-20°C to 85°C					
Humidity	10 to 90% (Noncondensing)					
Shock	IEC 60068-2-27, 25g, 11ms, 6 shocks per axis, total 18 shocks (X, Y, Z)					
Vibration	5~150Hz, 3g peak, (X, Y, Z)					
Protection	IP66 for front panel mounting					
Approvals	CE, UL(Class 1 Div.2), RoHS Compliant					

FP2043-E consist of one DB9 port that supports RS232 and RS485 levels on different pins. "Y" type cable can be used for separate RS232 and RS485 levels simultaneously

APPLICATION EXAMPLE



ORDERING INFORMATION

Models	Description
FP2043T-E	4.3" TFT, 24VDC, 2 Serial ports [#] (1 RS232, 1 RS485), 1 USB Device, 1 USB Host, 1 Pluggable I/O Module
FP2043TN-E	4.3" TFT, 24VDC, 2 Serial ports [#] (1 RS232, 1 RS485), 1 USB Device, 1 USB Host, 1 Ethernet, 1 Pluggable I/O Module
FP2070T-E	7" TFT, 24VDC, 2 Serial ports (RS232 / RS485), 1 USB Device, 1 USB Host, 3 Pluggable I/O Modules
FP2070TN-E	7" TFT, 24VDC, 2 Serial ports (RS232 / RS485), 1 USB Device, 1 USB Host, 1 Ethernet, 3 Pluggable I/O Modules
FP2101T-E	10.1" TFT, 24VDC, 2 Serial ports (RS232 / RS485), 1 USB Device, 1 USB Host, 5 Pluggable I/O Modules
FP2101TN-E	10.1" TFT, 24VDC, 2 Serial ports (RS232 / RS485), 1 USB Device, 1 USB Host, 1 Ethernet, 5 Pluggable I/O Modules

[#] FP2043-E consist of one DB9 port that supports RS232 and RS485 levels on different pins. "Y" type cable can be used for separate RS232 and RS485 levels simultaneously.

SUPPORTING OBJECTS

Drawing Tools
Line, Rectangle, Ellipse
Rounded Rectangle
Text, Multilingual text
Picture

Data Entry / Data Display
Numeric data
Bit data

Advanced Objects
Buttons
Lamps
Bargraph
Multiple Bargraph
Analog Meter
Alarm
Numeric Keypad
ASCII Keypad
Custom Keypad
Trends

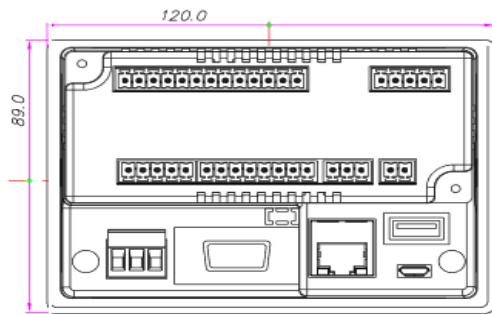
Supported Tasks
Button specific tasks
Global tasks
Screen specific tasks
Data exchange tasks

Clock Objects
Time
Date

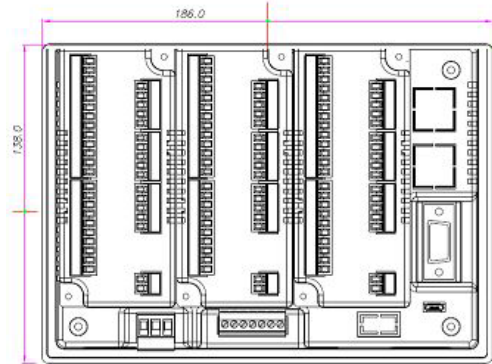
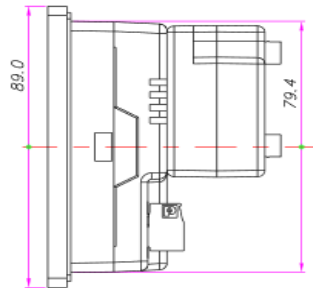
SUPPORTED PROTOCOLS

Sr. No.	Protocols	Sr. No.	Protocols
1	Delta PLCs Driver	6	Modbus RTU (Unit as Slave)
2	FlexiLogics Slave Driver (Serial)	7	Universal Serial Driver(ASCII)
3	FlexiLogics Master Driver (Serial)	8	Universal Ethernet Driver(ASCII)
4	Modbus ASCII (Unit as Master)	9	Modbus TCP/IP client
5	Modbus RTU (Unit as Master)	10	Modbus TCP/IP server
6	FlexiLogics Master Driver (Ethernet)		

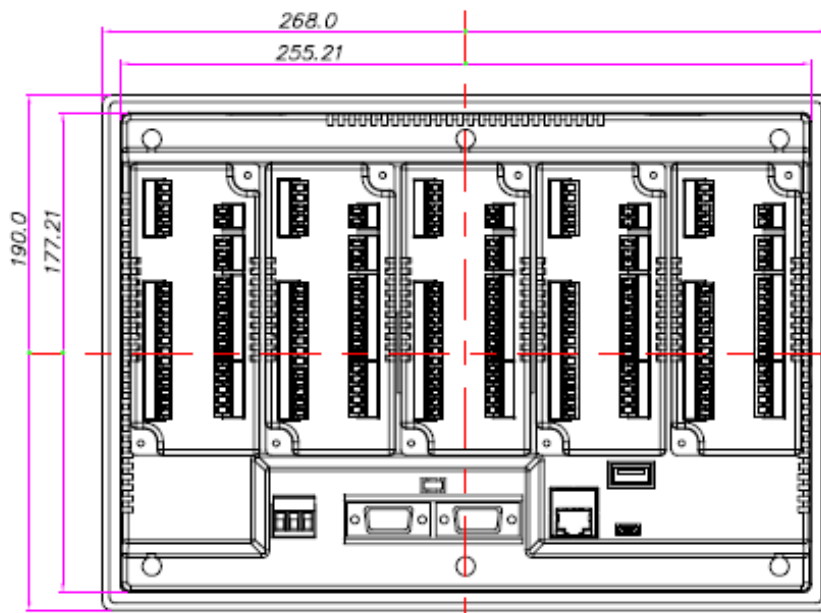
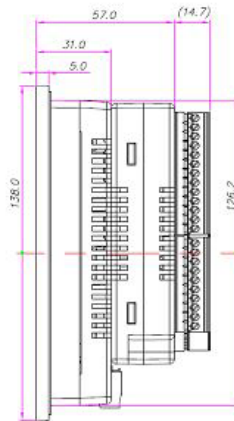
DIMENSIONS



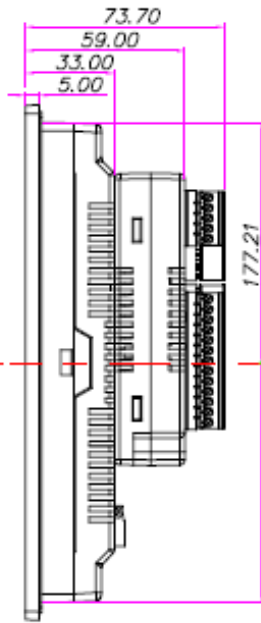
FP2043-E



FP2070-E



FP2101-E



Please contact factory for more information. We welcome an opportunity to develop new, custom drivers and customized units.



HEAD OFFICE
 Survey No. 2/6, Baner Road,
 Pune - 411045, India.
 Tel : +91 20 2729 2840 - 46
 Email : info@renuelectronics.com

FACTORY
 Gat No. 1163, Ghotawade,
 Tal - Mulshi, Pune - 412115, India.
 Tel: +91 20 6687 2900

REGIONAL OFFICES

- Ahmedabad
- Bangalore
- Chennai
- Coimbatore
- Kolkata
- Mumbai
- New Delhi

OVERSEAS DISTRIBUTORS

- USA
- Europe
- Asia Pacific

(Specifications subject to change without prior notice. DS-FP2-Rev.E)